



MONTHLY MEMBERSHIP PROGRESS REPORT

District 13 OH3

Results as of: 02/28/2018

GMT: CINDY GREGG

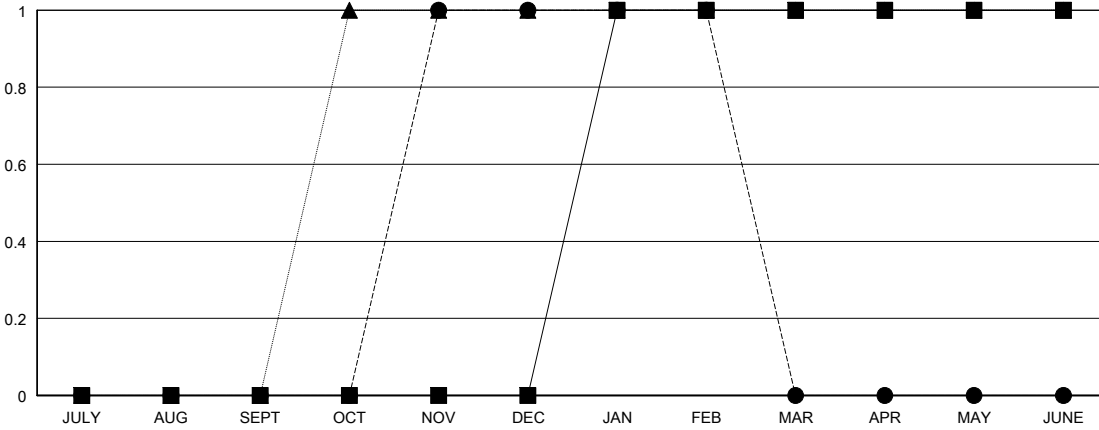
LOCATION OHIO

GMT CA

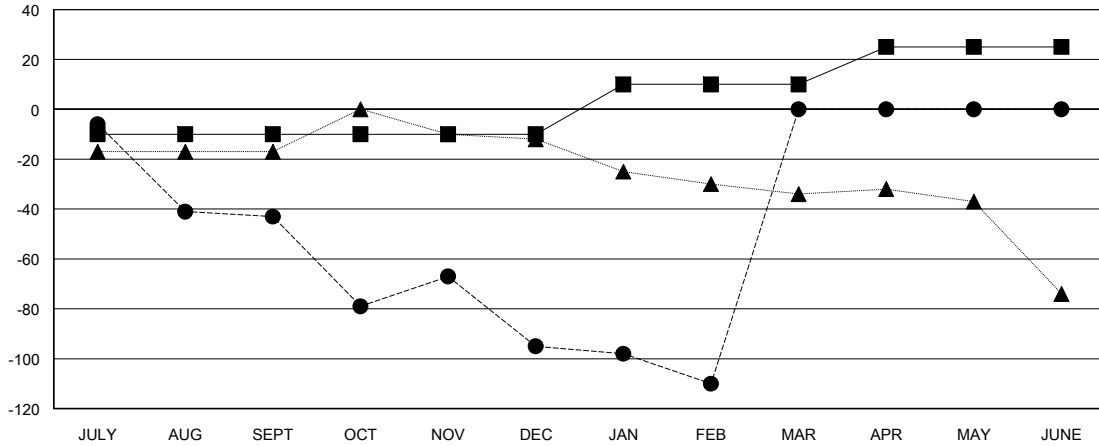
| Clubs | | | |
|-----------------------|---------------|-----------|---------------|
| RESULTS FOR 2017-2018 | | | |
| QUARTER | NEW CLUB GOAL | NEW CLUBS | DROPPED CLUBS |
| JULY/AUG/SEPT | 0 | 0 | 0 |
| OCT/NOV/DEC | 0 | 1 | 4 |
| JAN/FEB/MAR | 1 | 0 | 0 |
| APR/MAY/JUNE | 0 | 0 | 0 |

| Members | | | |
|-----------------------|------------------------|----------------------|--|
| RESULTS FOR 2017-2018 | | | |
| QUARTER | MEMBER GROWTH NET GOAL | MEMBER GROWTH ACTUAL | DROPPED MEMBERS ACTUAL (including transfers) |
| JULY/AUG/SEPT | -10 | 25 | 60 |
| OCT/NOV/DEC | 0 | 67 | 102 |
| JAN/FEB/MAR | 20 | 13 | 28 |
| APR/MAY/JUNE | 15 | 0 | 0 |

GOALS AND ACTUAL NEW CLUBS CUMULATIVE



GOALS AND ACTUAL MEMBERS CUMULATIVE



| |
|------------------|
| DROPPED CLUBS: 4 |
|------------------|

28 CLUBS OF 62 ADDED 1 OR MORE NEW MEMBERS

| GENDER DISTRIBUTION | |
|--|----------------|
| MALE | 1,078 (68.23%) |
| FEMALE | 502 (31.77%) |
| Women Percentage Fiscal Year Goal: 32% | |

| DROPPED MEMBERS | |
|-----------------|------------|
| DECEASED | 16 |
| CLUB CANCELLED | 38 |
| OTHER | 136 |
| TOTAL | 190 |

[CLICK HERE FOR CUMULATIVE MEMBERSHIP DATA](#)

| | |
|---------------------------------|-----|
| TOTAL FAMILY UNIT MEMBERS | 312 |
| FAMILY MEMBERS PAYING HALF DUES | 162 |